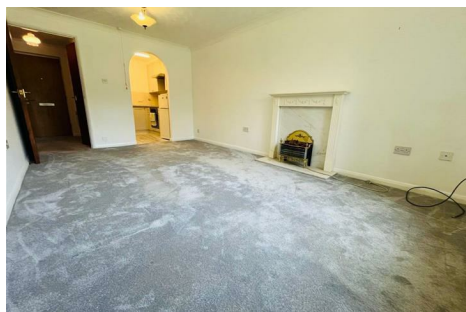


DAWSONS

Property Professionals since 1925

18/20 STAMFORD STREET STALYBRIDGE CHESHIRE TEL: 0161 338 2292

Website: www.wcdawson.com Email: reception@wcdawson.com



Lowry Court, Mottram, Hyde, SK14 6TG

This one-bedroom, ground floor apartment is set within the popular Lowry Court development for the Over 55s and offers well-proportioned accommodation in good order throughout.

Lowry Court is warden controlled and there are several onsite communal amenities including a residents lounge, hairdressers and laundry.

Price £90,000



**CHARTERED SURVEYORS, ESTATE AGENTS
& PROPERTY MANAGEMENT SPECIALISTS**



Lowry Court, Mottram, Hyde, SK14 6TG

- One-Bedroom Ground Floor Apartment
- Popular Over 55s Lowry Court Development
- Modern Fitted Kitchen
- Built-in Wardrobes and Fitted Furniture to Bedroom
- Good Decorative Order
- Well-Maintained Communal Gardens
- Communal Facilities
- No Onward Chain

The Accommodation Briefly

Comprises:

Communal entrance hallway.

To the apartment there is an entrance hallway, good size living room, re-fitted kitchen, bedroom with built-in wardrobes and further fitted bedroom furniture, shower room/WC.

Externally, there is ample onsite parking and delightful communal gardens which are laid mainly to lawn with a variety of mature border plants and shrubs.

Local amenities are within easy reach. There is good accessibility to the M67 and M60 motorways with several train stations also being within easy reach. For a wider array of amenities, Stalybridge and Glossop town centres are also readily accessible.

The Accommodation In Detail

Comprises:

COMMUNAL

Entrance Hallway

Residents Facilities

Including residents lounge, managers office,

hairdressers and laundry room with seating areas around the developments corridors.

APARTMENT ITSELF

Entrance Hallway

Two built-in storage cupboards, wall-mounted electric radiator.

Lounge

17'2 x 10'7 (5.23m x 3.23m)

Feature fireplace, uPVC double-glazed window, wall-mounted electric radiator.

Kitchen

7'7 x 7'2 maximum (2.31m x 2.18m maximum)

Single drainer stainless-steel sink unit, a range of modern wall and floor mounted units, built-in stainless-steel oven, four-ring ceramic hob with filter unit over, part tiled, laminate flooring.

Bedroom

14'8 x 9'4 (4.47m x 2.84m)

Built-in wardrobes, fitted bedroom furniture, uPVC double-glazed window, wall-mounted electric radiator.

Shower Room/WC

Shower cubicle, low-level WC, wash hand basin, fully tiled, heated chrome towel rail/radiator.

EXTERNAL

Externally, there is ample onsite parking with well-maintained communal gardens which are laid mainly to lawn with a variety of mature border plants and shrubs.

TENURE

Tenure is Leasehold - Solicitors to confirm.

GROUND RENT

Ground Rent is £125 per annum.

COUNCIL TAX

Council Tax Band "B".

VIEWINGS

Strictly by appointment with the Agents.

AML Checks

We are required by law to conduct Anti Money Laundering (AML) checks for all vendors and purchasers. A non refundable fee of £15 per check will be payable to cover this digital process. These checks are carried out by Thirdfort.

This is a legal requirement to meet HMRC and UK law guidelines .



Directions



Floor Plan

GROUND FLOOR



While every attempt has been made to ensure the accuracy of the finished construction from measurements of plans, elevations, rooms and any other items are approximate and no responsibility is taken for any error, omission or misstatement. This plan is for illustrative purposes only and should not be used as a basis for any prospective purchase. The services, systems and appliances shown have not been tested and no guarantee as to their operability or efficiency can be given. Model and reference 1/2020

These particulars, whilst believed to be accurate are set out as a general outline only for guidance and do not constitute any part of an offer or contract. Intending purchasers should not rely on them as statements of representation of fact, but must satisfy themselves by inspection or otherwise as to their accuracy. No person in this firm's employment has the authority to make or give any representation or warranty in respect of the property.

